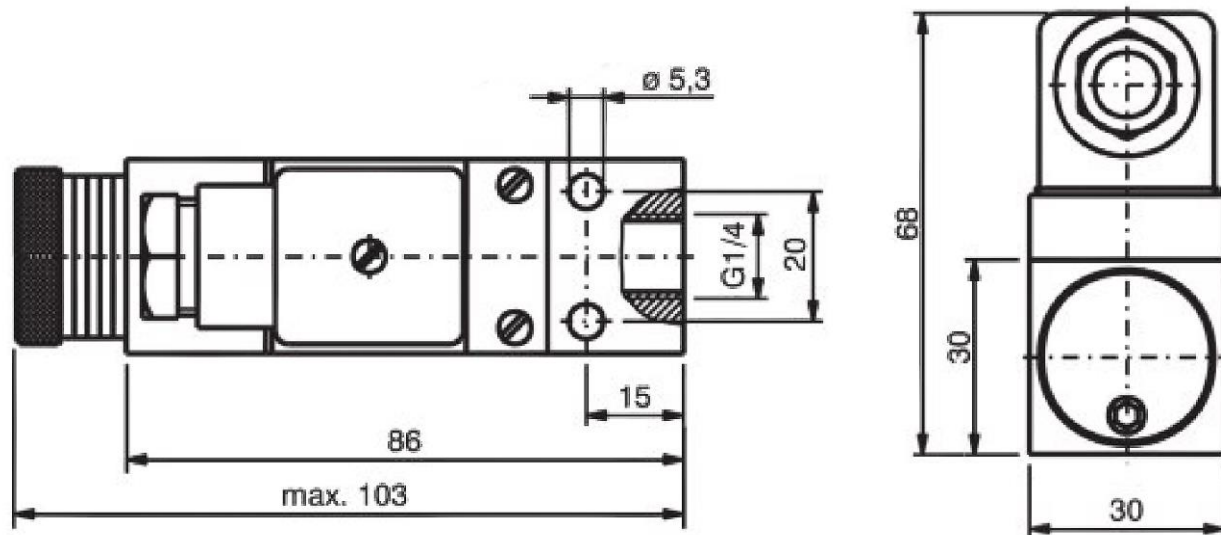
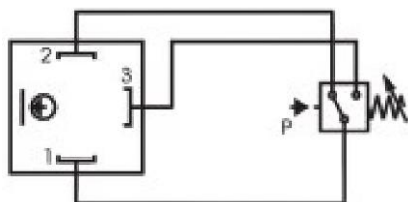


## SPÍNAČ TLAKU DS 117- 70/B



### Schéma zapojení spínače



Connection:

NCC: clamp 1-2

NOC: clamp 1-3

Technické parametry			
<b>Pracovní kapalina</b>	hydraulický olej a jeho emulze	<b>Rozsah pracovní teploty</b>	-40 až +90 °C
<b>Rozsah spínaného tlaku</b>	5 – 70 bar	<b>Připojení</b>	G 1/4"
<b>Max. pracovní tlak</b>	200 bar	<b>Elektrické připojení</b>	DIN 43650
<b>Napájení</b>	24 V(DC) nebo 250 V(AC)	<b>Materiál přípoje</b>	hliník
<b>Třída přesnosti</b>	1 %	<b>Materiál pouzdra</b>	nebarvený hliník

## Objednací klíč

basic type DS-117 or DS-112			DS-1**	-	/	/	/	/	
switching pressure ranges	p <sub>max.</sub> standard	p <sub>max.</sub> special SS seal							(several additional details separated by slash)
070 = 5- 70 bar	200 bar	- bar							
150 =10- 150 bar	400 bar	- bar							
240 =20- 240 bar	500 bar	400 bar							
350 =20- 350 bar	500 bar	400 Bar							
Fixed switching points preset by manufacturer: - standard pressure rising / - falling if desired									
<b>B</b>	= pipe installation								
<b>F</b>	= flange connection								
<b>B/P90</b>	= with 90° elbow connection plate (p max. = 350 bar)								
<b>V3</b>	= adjusting knurl with scale								
<b>AUX<sup>1)</sup></b>	= gold on silver palladium								
<b>MS<sup>1)</sup></b>	= brass housing								
<b>S</b>	= Viton® fluoroelastomers								
<b>SS<sup>1)</sup></b>	= special low-friction seal								
<b>undesign.</b>	= cable socket conforming to EN 175301-803 model type A, Pg9 (Pg11 on request)								
<b>L-MP 24</b>	= 4-pole 24 V lamp socket								
<b>LED-34</b>	= 4-pole socket with LED function display								
<b>M12</b>	= M12x1 (4-pole socket, axial or 90°-version on request)								

